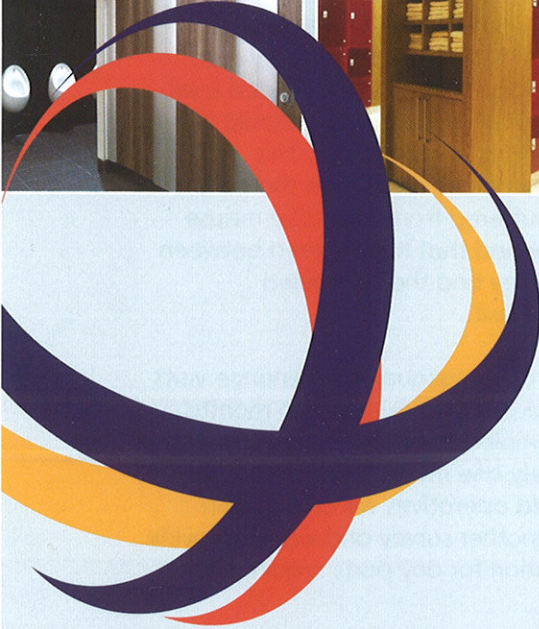
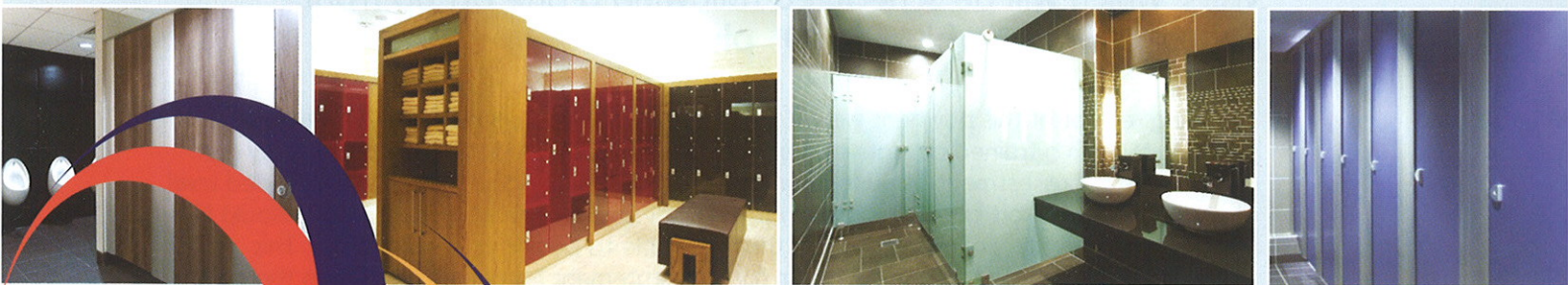


prospec maintenance

maintenance service package



The Prospec Maintenance Service Package is available to ensure your changing facilities remain fully functional at all times, ensuring that you deliver first class standards to your customers.

Prospec Limited are the company that installed equipment in your changing areas (lockers, cubicles, seating etc) and we would like to take this opportunity to inform you that we are able to offer a maintenance service package on these products. In addition to the servicing and repair of our items Prospec can also supply all necessary components, some of which are unique to our systems.

From only £500* per 12 months

Please see reverse for full details

prospec 
...working around your leisure

maintenance service package

prospec maintenance

The maintenance services package will cover 2 annual service visits, which will be scheduled following a one off up front annual payment of just **£500* plus vat.**

Following receipt of this payment we will provide you with a trained operative who will undertake a full assessment of our equipment at your centre and sort out any spares that you may have on site. Following on from this visit you will be provided with a quotation for any parts found to be required together with details of any recommended spares that we feel you should hold. A purchase order will be required for these parts and when these items are available we will then schedule our first maintenance visit.

This service visit will include the following work

- The lubrication of all lock cylinders
- The checking of all locks with a coin and the carrying out of any adjustments or repairs where necessary.
- The tightening of all locker hinge screws
- The realignment of locker doors
- The carrying out of general repairs where necessary including the stripping down and rebuilding of locks, removal of broken keys etc.
- The fitting of any parts identified in our initial survey.
- The general repair of all other products as and where necessary e.g. cubicles, bench seating (if applicable).

It is anticipated that providing that all of the items identified in our original survey are ordered along with the recommended level of spares, that all of the lockers should be able to be left in working order. This statement is however subject to the centre having not suffered from excessive misuse during the period that has elapsed between this initial survey and the scheduled maintenance visit.

The second of the annual maintenance visits will be scheduled approximately 6 months after the completion of the first visit. However approximately one month prior to this one of our trained operatives will once again undertake another survey and we will provide you a quotation for any parts required at this stage.

This maintenance service package includes all of the associated labour costs for the 12-month period so you will only pay for the cost of any parts required in addition to the initial up front payment.

* The £500 is based on an average sized installation (e.g. approx 200 locker compartments). Additional charges will apply where the work has to be carried out over 2 consecutive days or outside of our standard working hours.

call +44 (0) 1709 377147
or email: mas@prospec.co.uk
www.prospec.co.uk

prospec 
...working around your leisure

Prospec Limited Canklow Meadows Estate, West Bawtry Road, Rotherham S60 2XL, England