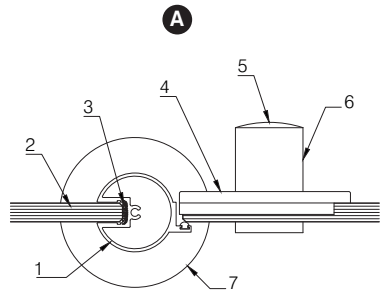
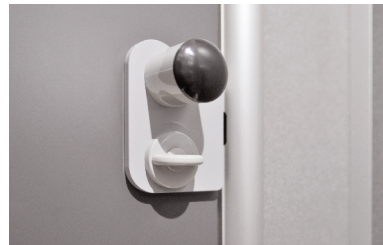


CLASSIC

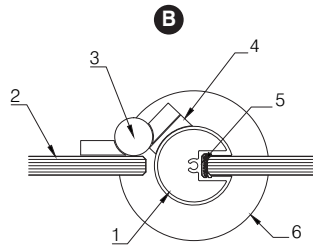
Technical



- A Classic Lock Detail**
- 1 - Aluminium profile.
 - 2 - Compact grade laminate.
 - 3 - Silicone.
 - 4 - Aluminium latch plate.
 - 5 - Buffer (door knob).
 - 6 - Nylon door knob.
 - 7 - Nylon foor rosette.



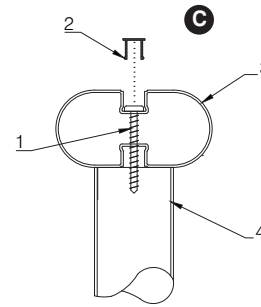
Door Lock



- B Classic Hinge Detail**
- 1 - Aluminium profile.
 - 2 - Compact grade laminate.
 - 3 - Hinge.
 - 4 - Nylon hinge packer.
 - 5 - Silicone.
 - 6 - Nylon foor rosette.



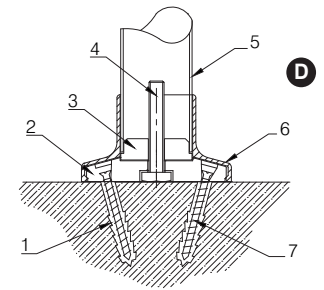
Door Hinge



- C Classic Head Rail Section Detail**
- 1 - Screw.
 - 2 - Aluminium clip-in profile.
 - 3 - Aluminium head section.
 - 4 - Aluminium profile.



Head Rail



- D Classic Foot Section Detail**
- 1 - Plastic plug.
 - 2 - Inner (2 part assembly).
 - 3 - Nylon insert.
 - 4 - Adjustment bolt.
 - 5 - Aluminium inner profile.
 - 6 - Shroud.
 - 7 - Screw



Foot

