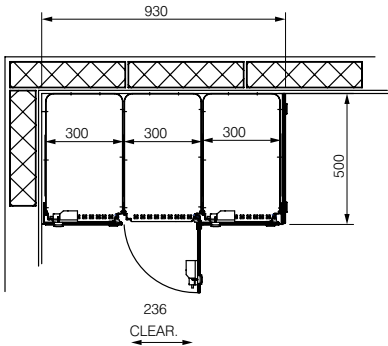


LOCKER

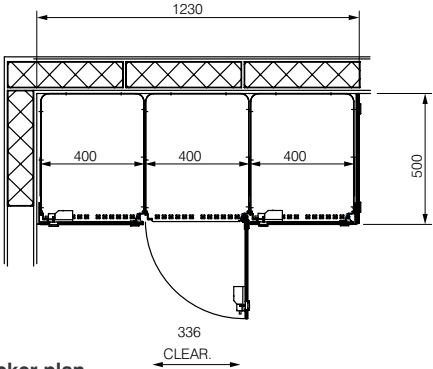
Systems



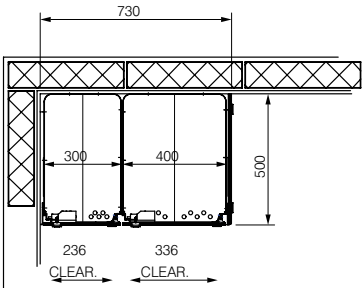
Locker Configuration



Locker plan

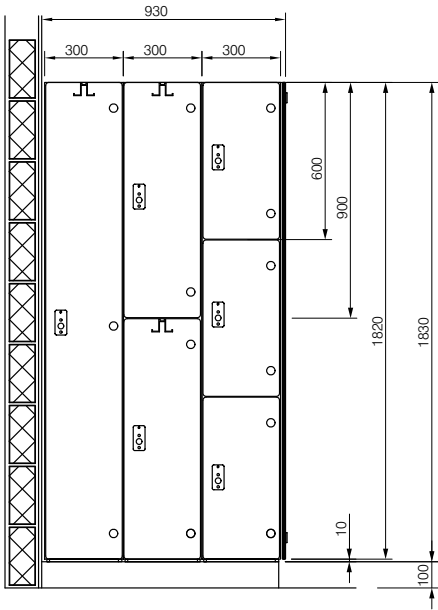


Locker plan

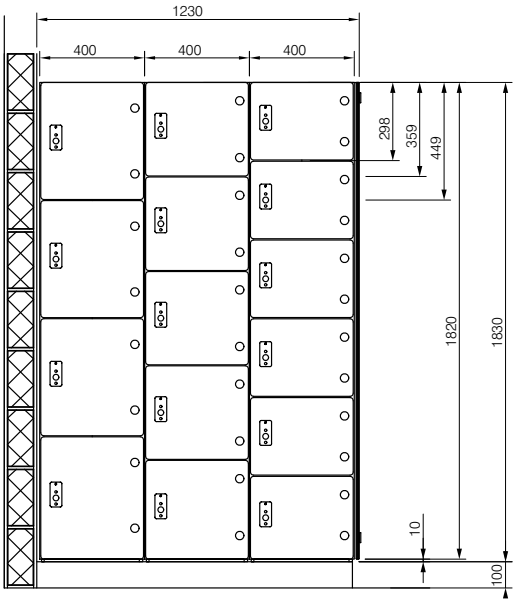


Locker plan

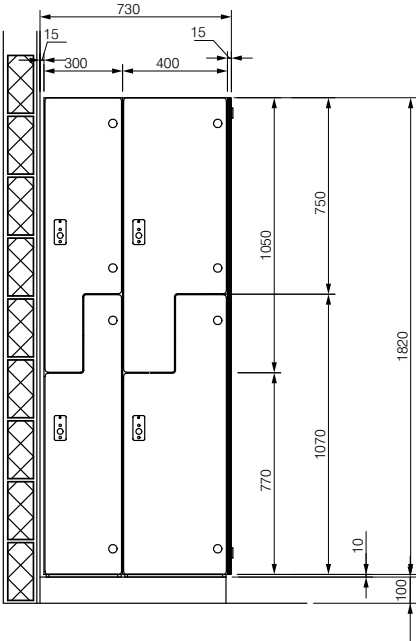
Clear opening size for a 300mm & 400mm wide 'Z' locker.



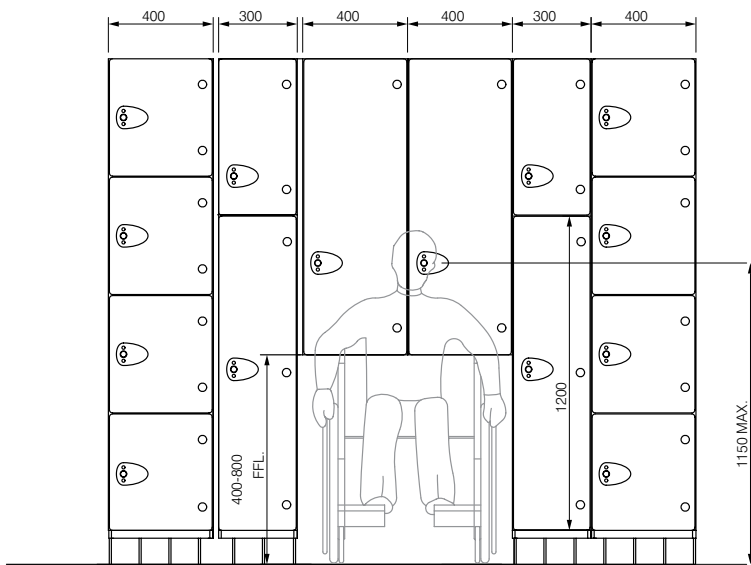
Generic locker front elevation.
300mm wide (various tierage).



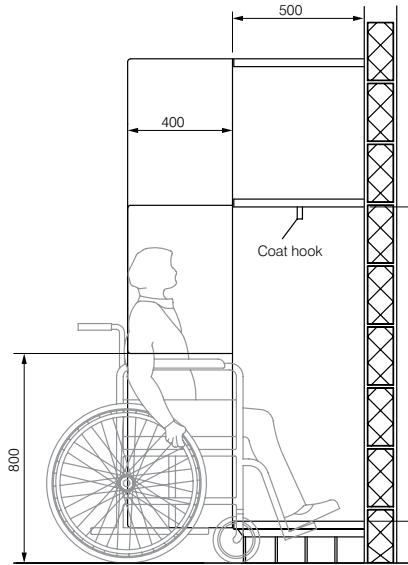
Generic locker front elevation.
400mm wide (various tierage).



Generic 'Z' locker front elevation.
300mm & 300MM wide.

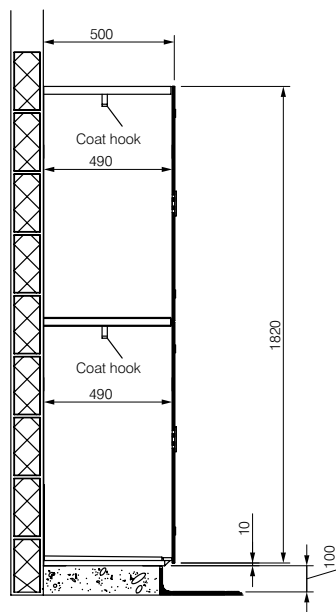


Accessible lockers elevation

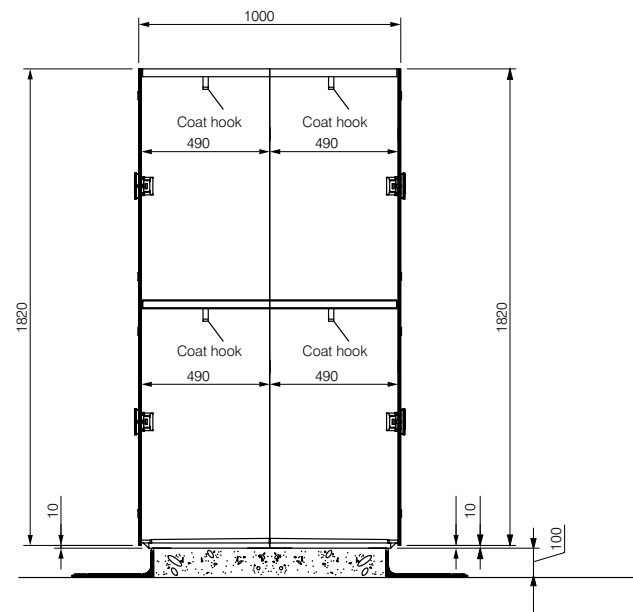


Typical section

Accessible lockers section



Generic locker side elevation



Back to back lockers side elevation

LOCKER
Systems



LOCKER

Systems

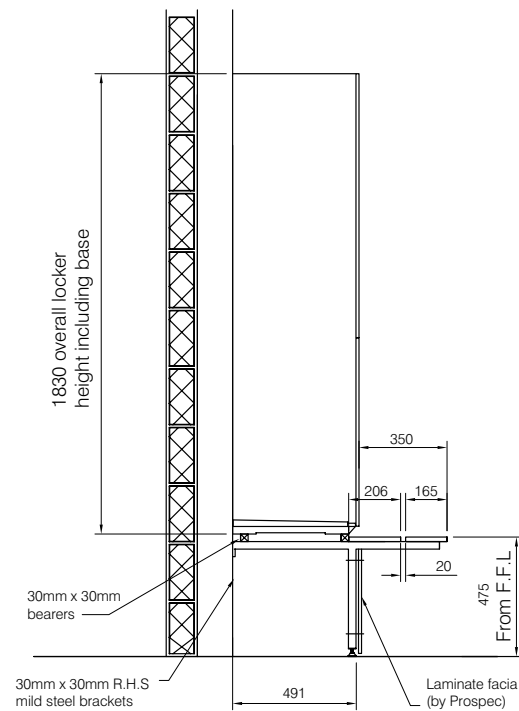
Locker 300mm Wide X 500mm Deep Capacity (Approx) M³

	Height	Height	Height	Height	Height	Height
Tierage	900	1000	1200	1500	1800	2000
1	0.1350	0.1500	0.1800	0.2250	0.2700	0.3000
2		0.0750	0.0900	0.1125	0.1350	0.1500
3			0.0600	0.0750	0.1350	0.0990
4			0.0450	0.0563	0.0675	0.0750
5				0.0450	0.0540	0.0600
6					0.0450	0.0499

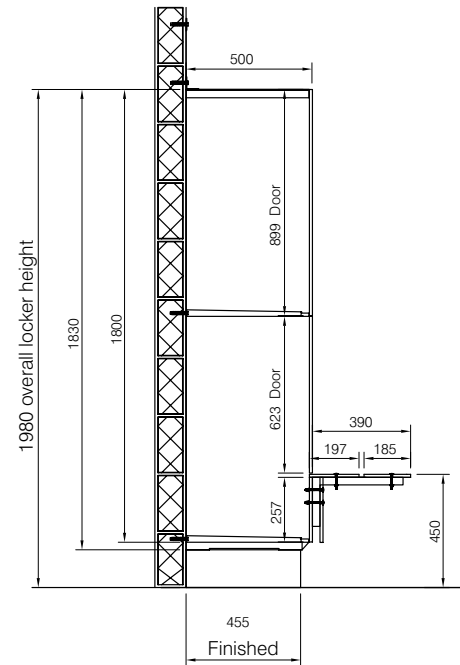
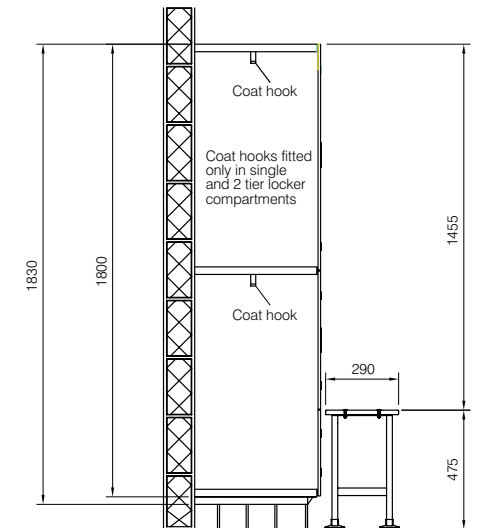
Locker 400mm Wide X 500mm Deep Capacity (Approx) M³

	Height	Height	Height	Height	Height	Height
Tierage	900	1000	1200	1500	1800	2000
1	0.1800	0.2000	0.2400	0.3000	0.3600	0.4000
2		0.1000	0.1200	0.1500	0.1800	0.2000
3			0.0800	0.1000	0.1200	0.1300
4			0.0600	0.0750	0.0900	0.1000
5				0.0600	0.0720	0.0800
6					0.0600	0.0666

Locker Setting Out.

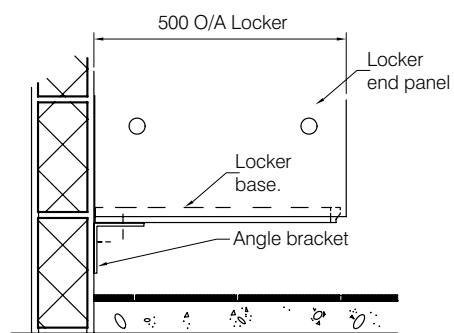


Section detail locker support bench seating

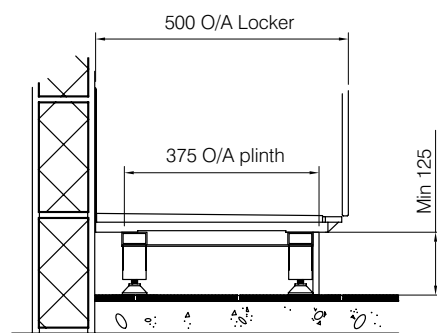
Section detail weller locker
with cantilevered bench

Section detail welled locker with floor mounted bench

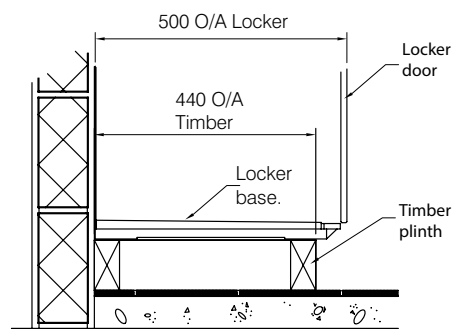




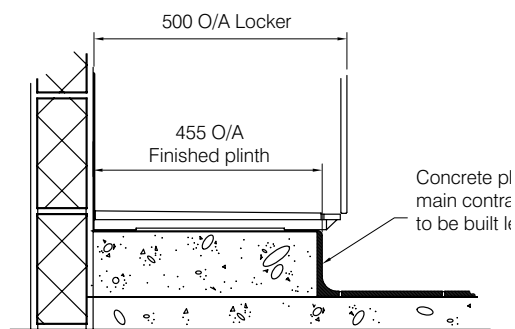
Angle bracket option



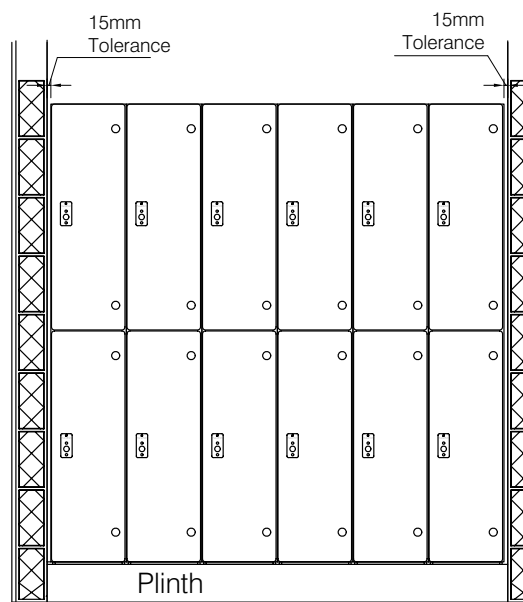
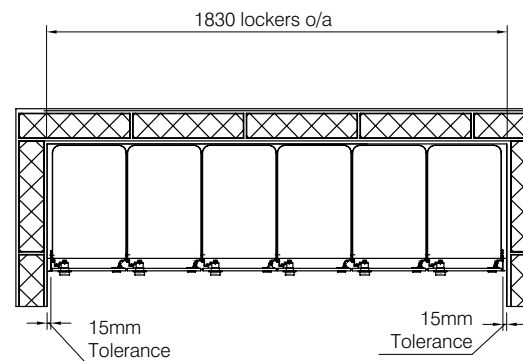
**Aluminium frame
plinth option**



Timber plinth option



**Concrete plinth
option**



**Locker tolerance
between walls**

LOCKER

Systems

